



**rihac**

more colour, better choices

# ***Premium Continuous Ink Supply System***

## **Instruction Manual**

For HP Printers  
Officejet Pro 8000 & 8500 Series  
Using HP940 Cartridges



# Instruction Manual

Continuous Ink Supply Systems  
HP Officejet Pro 8000 & 8500 Series

Congratulations on your purchase of a **rihac**® Continuous Ink Supply System (CISS). Before using the system please read this manual carefully. It will help you install the system correctly and ensure trouble free printing.

**Great care is taken to prepare your CISS for trouble free installation. Your CISS has been pre-filled and should be ready for immediate installation into your printer.**

Please be aware that some of the ***pictures in this manual may not represent the printer you are working with.*** Please refer to the back of this instruction manual for assistance with troubleshooting. Alternately you can contact us via email – [info@rihac.com.au](mailto:info@rihac.com.au) or phone on 61(3) 9005 5555 for technical support and troubleshooting.

## 1) Printer Pre-check.

Before opening your CISS, please perform the following print tests with original cartridges to ensure your printer heads are in good condition.

The following printer pre-check requirements must be undertaken with your original cartridges.

- a) Perform a printer test page. This is done by accessing the HP Solution Centre. Once in the solution centre choose the 'Settings' option (pic i). When the second screen appears select 'Printer Toolbox' (pic ii).

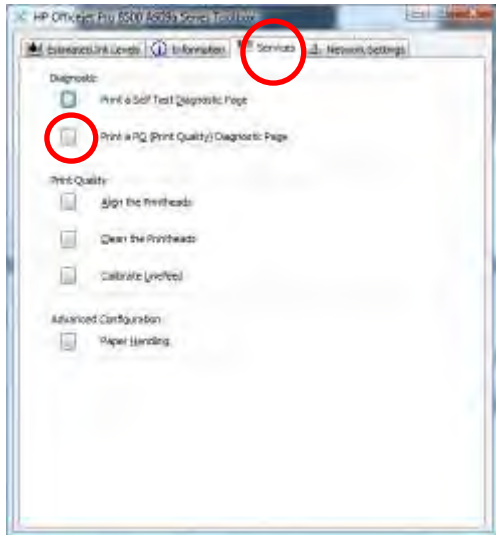


Picture (i)



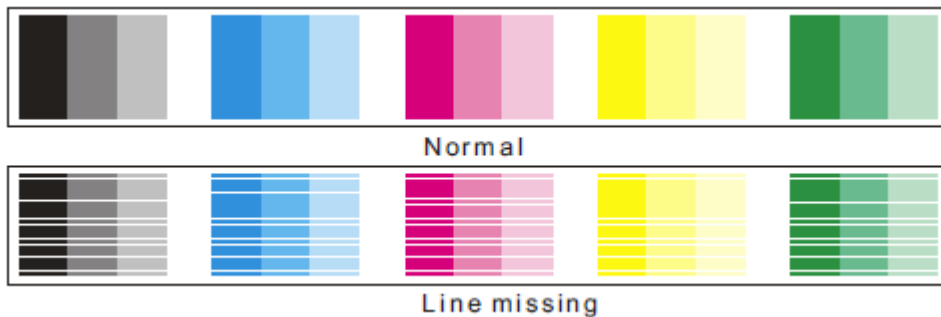
Picture (ii)

- b) Once the toolbox appears select the 'Services' tab and choose 'Print a PQ print quality diagnostic sheet'.



- c) Your printer will print a print quality diagnostic page as per the below picture.

Please check the test page to ensure your printer heads are functioning normally.



If your printer has produced a normal quality check you can continue with the CISS installation. If there are lines missing you will need to perform the print head cleaning options in the HP printer toolbox. Please attach a copy of the check to your purchase receipt as this will validate your warranty.

## 2) Preparing your new CISS for installation

Please ensure the following are present with your CISS.

- (1) Air filters x 4
- (2) Spare filler plug
- (3) Syringe
- (4) Large filler needle
- (5) Hypodermic needle
- (6) Cartridge sticker sheet
- (7) Spare elbow joints and grommets



Please contact **rihac**<sup>®</sup> if any of these items are missing.

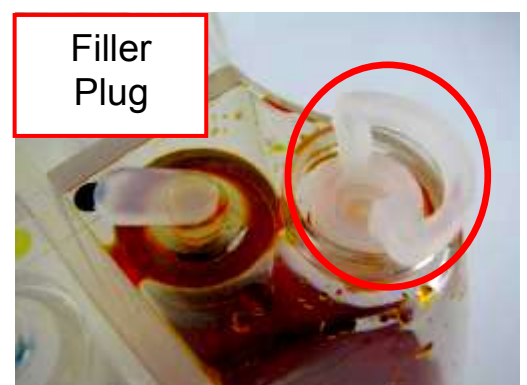
- b) Remove your CISS from the box and check there are no leakages or cracks and that the silicone tubing is not damaged.
- c) Inspect the silicone tubing for air pockets.



If you have an excessive amount (3cm or more) of air in the tubing, you will need to prime the unit. Please refer to priming section on page **Error! Bookmark not defined..**

This will prevent any problems with your print quality further down the track.

- d) Carefully remove the small travel plug from the CISS.



- e) Using the syringe with no needles attached, place the syringe in to the top of the hole exposed by the smaller travel plug. (This is the top of the air balance tube) push down on the syringe until you see the main chamber bubbling.

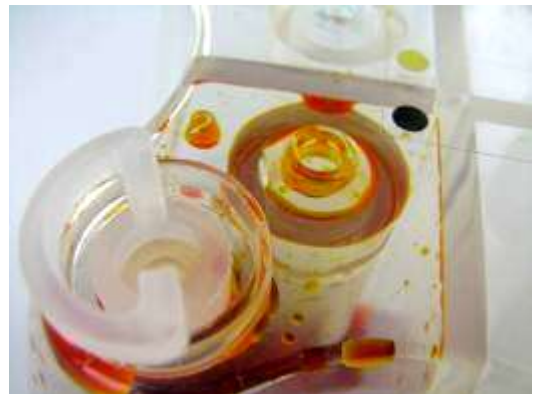


**Push  
down  
slowly  
on  
syringe**



**Ensure that the filler plug is removed.**

- f) Replace the filler plug THEN remove the syringe slowly. Do this for all the colours



- g) Place the CISS on the left hand side of the printer.



### 3) Preparing the Cartridges

- a) Open the printer cartridge cover and remove the genuine cartridges from the printer.



- b) Use a knife and cut the adhesive label on both sides of the cartridge. This will allow the chip base to be removed from the genuine cartridge for attachment onto the CISS cartridges.



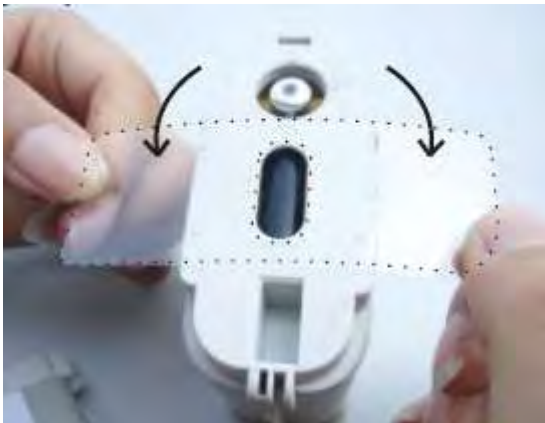
- c) Remove the chip base from the genuine cartridges.



- d) Remove the chip bases from the CISS cartridges. Attach the chip bases removed from the genuine cartridges onto the base of the corresponding CISS cartridges. Ensure the correct coloured chip bases are attached to the same coloured cartridges on the CISS.



- e) Using the adhesive stickers provided in your kit, to affix the chip bases to each CISS cartridge.



#### 4) Installing the CISS

- a) Open the printer cartridge cover and insert the CISS cartridges.



- b) Using the spare filler plug supplied in your kit, place it into the ink bay sensor switch. This will trick the printer into thinking the cover is closed.



- c) Check the installation process has been performed correctly by re-performing a head clean as per section 1 on page 2 of this booklet on page.

Please note that this may need to be performed several times to ensure excess air is removed from the lines.

**Congratulations you have now successfully installed your new rihac<sup>®</sup> Continuous Ink Supply System.**

**CAUTION**  
**DO NOT HAVE THE INK RESERVOIRS HIGHER OR LOWER THAN THE PRINTER HEIGHT. THIS WILL EFFECT THE INK FLOW TO YOUR PRINTER, AND MAY CAUSE YOUR PRINTER TO FLOOD WITH INK.**