

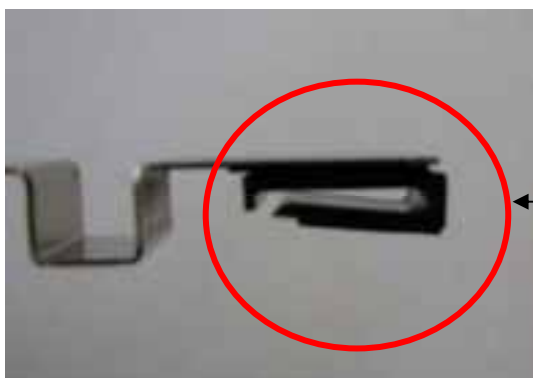
MP600 & MP610 Specific Install Instructions

Version 2

- a) Included in your accessories package you will find three large clips. Please contact Rihac if your accessories package does not contain these items.

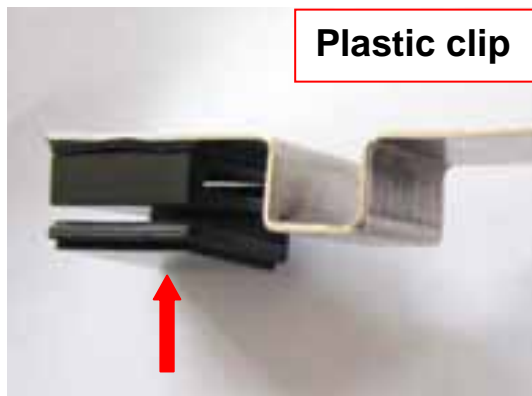


- b) Located on the metal tube support arm is a plastic clip. The plastic clip is attached using double sided tape. For installation into the MP600 & 610 the clip will need to be removed.



**Remove
Plastic Clip**

- c) Reattach the plastic clip on the rear of the metal tube arm with a piece of double sided tape. When reattaching the clip, place the lip of the clip so that it will face the rear of the printer when attached. As pictured below.



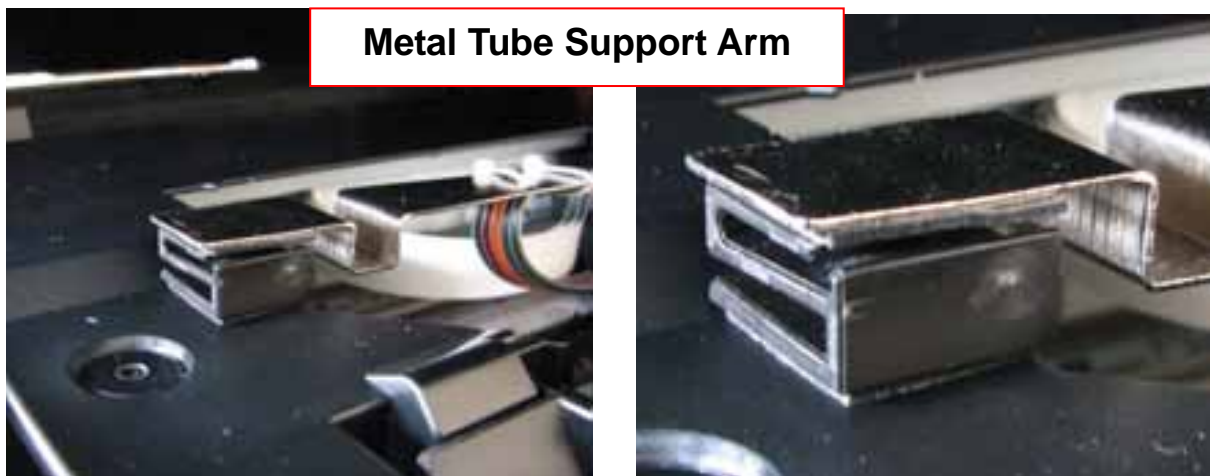
Plastic clip

Lip of the clip



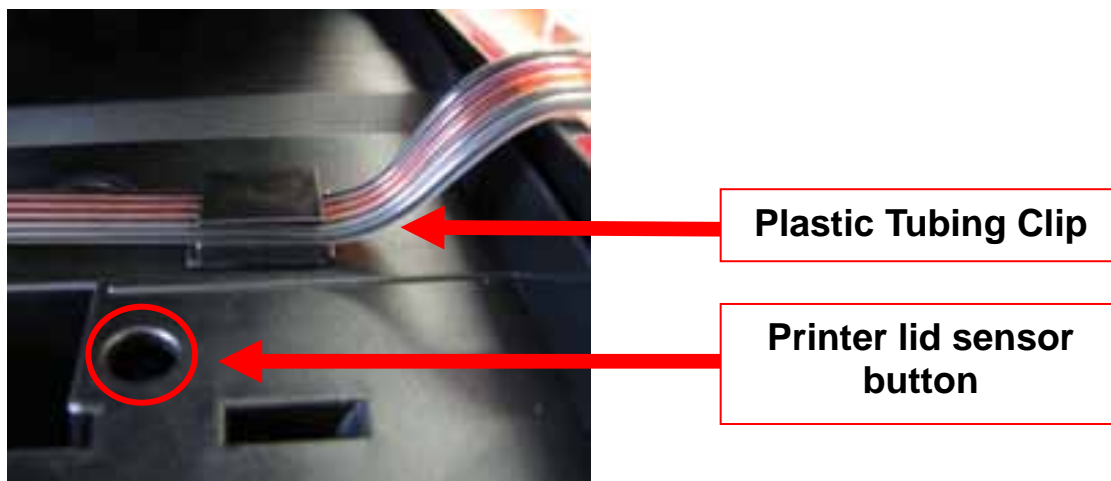
Lip of the clip

- d) Attach the metal tube arm (with the plastic clip) on to the left side of the printer opening. The ideal position of the clip is to place it along the angled edge mold.



Metal Tube Support Arm

- e) Place the plastic clip that is situated on the tubing on the opposite side of the printer. When attaching this clip place it along or in front of the angled edge mold. Allow the tubing to run up and out the side of the printer.



Plastic Tubing Clip

Printer lid sensor button

- f) Adjustments to the tube length may be required. To check this, remove the power cable from the back of the printer when the cartridges are in the change position. This will allow you to move the cartridge holder left and right to each end of the printer. It should reach both ends with ease. Check that the tubing is neither too loose nor too tight. The tubing should not interfere with the printer data wire nor should it fall down into the paper support.



- g) If required, adjust the tube length by gently pulling the silicone tubing in the direction required.

PLEASE DON'T HAVE THE TUBING FITTED TOO TIGHTLY!

- h) Using the large clips included in the accessories package place a piece of double sided tape on one of the sides and attach the clips in the printer as pictured below so as that the tubing will not be crimped when the lid closes. One clip should be positioned on each side.

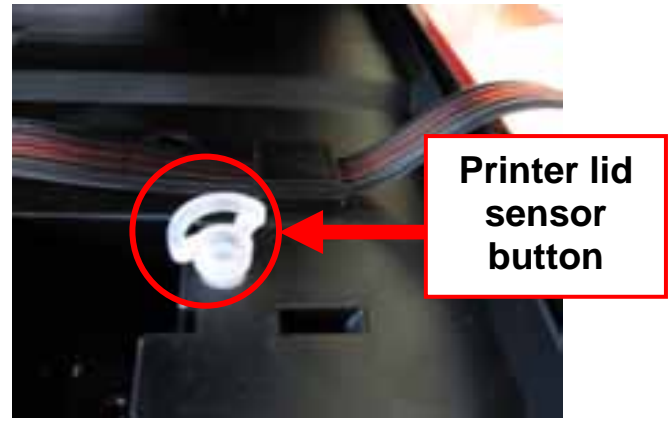


Left Hand Side

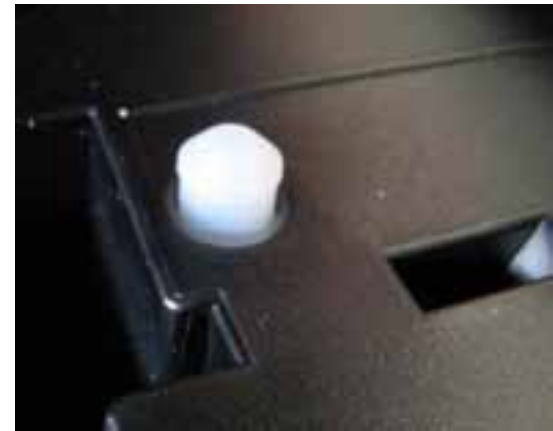
Large Plastic Clip

Right Hand Side

- i) Place the filler plug from the empty ink tank into the printer lid sensor button.



In some models it have be better to cut the 'pull handle' off the plug and insert it into the sensor switch hole upside down



- j) Reinsert power cable to the rear of your printer and perform a head clean and nozzle check as per steps 1a, b and c of your manual. Please note that this may need to be performed several times to ensure excess air is removed from the lines.

Congratulations you have now
Successfully installed your new
rihac Continuous Ink Supply System.



CAUTION
DO NOT HAVE THE INK RESERVOIRS HIGHER OR LOWER THAN THE PRINTER HEIGHT. THIS WILL EFFECT THE INK FLOW TO YOUR PRINTER, AND MAY CAUSE YOUR PRINTER TO FLOOD WITH INK