



more colour, better choices

Premium Continuous Ink Supply System

Instruction Manual

For Epson Printers
TX700W, TX710W,
TX800FW, TX810FW
Artisan 725, Artisan 835



Instruction Manual

Continuous Ink Supply Systems

TX700W, TX710W, TX800FW, TX810FW, Artisan 725, Artisan 835 -100ml Series

Congratulations on your purchase of a **rihac** Continuous Ink Supply System (CISS). Before using the system please read this manual carefully. It will help you install the system correctly and ensure trouble free printing.

Great care is taken to prepare your CISS for trouble free installation. Your CISS has been pre-filled and should be ready for immediate installation into your printer.

Please be aware that some of the pictures in this manual may not represent the printer you are working with. Please refer to the back of this instruction manual for assistance with troubleshooting. Alternately you can contact us via email – info@rihac.com.au or phone on 61(3) 9005 5555 for technical support and troubleshooting.

1) Printer pre-check.

Before opening your CISS, please perform the following print tests to ensure your printer heads are in good condition.

- a) Perform a printer head clean.

This is done by accessing your printer properties through the start menu on the bottom left of your screen and choosing the control panel.

Go to **Printers and Faxes** and locate your printer. Right click your mouse button and choose **Properties** from the menu and then select **Printing Preference** located at the bottom of the general tab.

Choose the maintenance tab and select **Head Clean**.



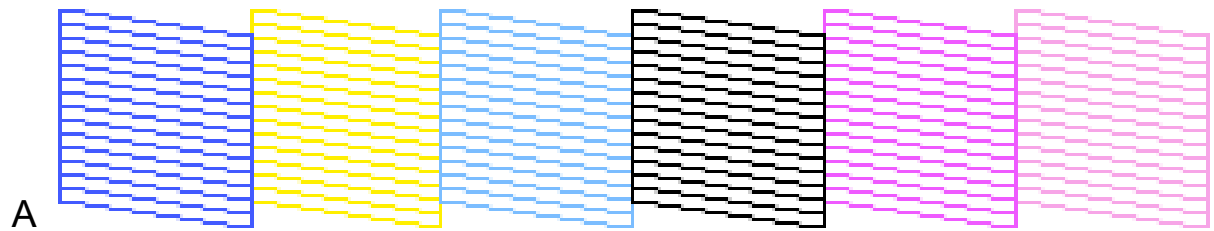
(a).



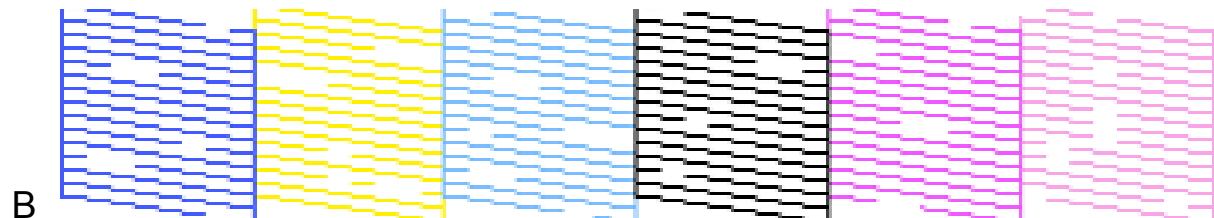
(b).

- b) After performing a head clean you must then perform a **Nozzle Check**. The computer will automatically ask you this, however if it does not, simply choose to perform a „Nozzle Check“ on the printer maintenance screen.

Your printer will print either of the following;



No missing lines.



Missing lines.

If your printer has produced a perfect result (A), please attach a copy of the nozzle check to your purchase receipt as this will validate your warranty. You can now start to install your CISS.

If your printer has printed with missing lines or uneven colouring (B) please repeat steps 1 A & B on page 2 again. If your second print is similar to the first, you more than likely have damaged printer heads and you will need them replaced before successfully installing a CISS.

2) Preparing your new CISS for installation

Please ensure the following are present with your CISS.

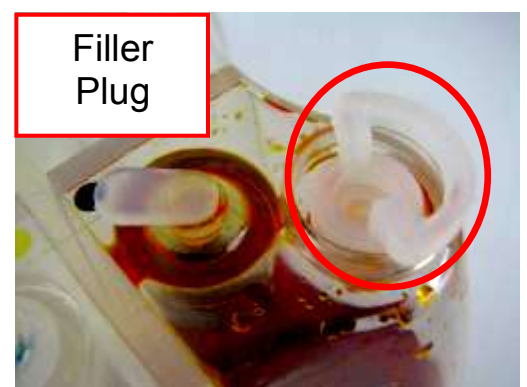
- (1) Air filters x 6
- (2) Double sided tape tabs
- (3) Syringe + 1 x large needle
- (4) Screw driver
- (5) Spare elbow joints and grommets



Please contact RIHAC Digital Solutions if any of these items are missing. Remove your CISS from the box and check there are no leakages or cracks and that the silicone tubing is not damaged.

3) Preparing your ink reservoirs

- a) Carefully remove the small travel plugs and large filler plugs from the CISS.



- b) Using the syringe with no needles attached, place the syringe in to the top of the hole exposed by the smaller travel plug. (This is the top of the air balance tube) push down on the syringe until you see the main chamber bubbling.

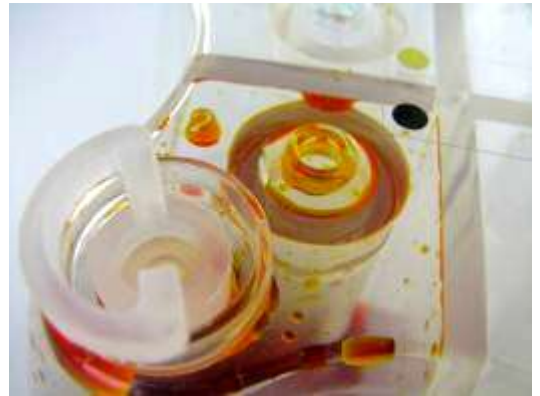


Push down slowly on syringe



Ensure that the filler plug is removed.

- c) Replace the filler plug THEN remove the syringe slowly. Do this for all the colours.



- d) Place the CISS on the right hand side of the printer. With the power still on, remove the power cable from the back of the printer.



Insert all the air filters into each air reservoir. The thin/longer end should be placed into the top of the air reservoir.



- e) Remove the OEM cartridges. Please retain these cartridges. Store them away in a cool dark place. It is also recommended that you cover the ink nozzles with some tape to prevent them drying out.

4) Printer Setup & Modification

a) Remove the retaining screw using a Phillips head screwdriver.

TX700W, TX710W & Artisan 725 Models



TX800FW, TX810FW & Artisan 835 Models



b) Lift and bend the plastic printer casing revealing the small magnetic sensor. (The top casing is not completely removed)

TX700W, TX710W & Artisan 725 Models



TX800FW, TX810FW & Artisan 835 Models

Extend the side casing away from the printer with your right hand.



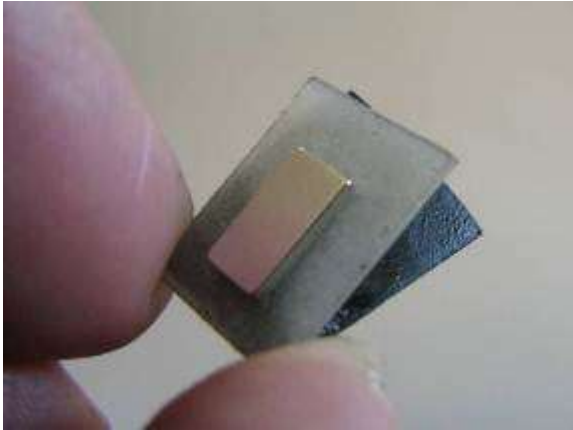
Using your left hand push the top casing from the front, towards the rear of the printer and also slightly to the left. This section will unclip revealing the sensor.



- c) The magnetic sensor is attached to the printer body with double sided tape. Gently remove the sensor (with plastic backing) from the printer using the screwdriver provided.

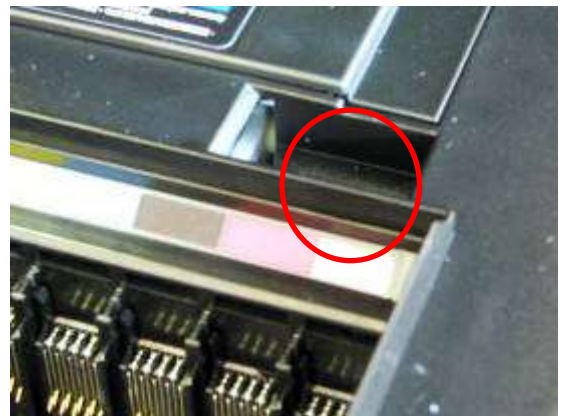


- d) Attach a piece of double sided tape (provided in your kit) to the rear of the sensor plastic then remove the backing tape.



- e) Attach the sensor with the double sided tape in the area depicted below. Install the sensor to the right of the opening in a vertical position. Try aligning the top of the sensor with the casing.

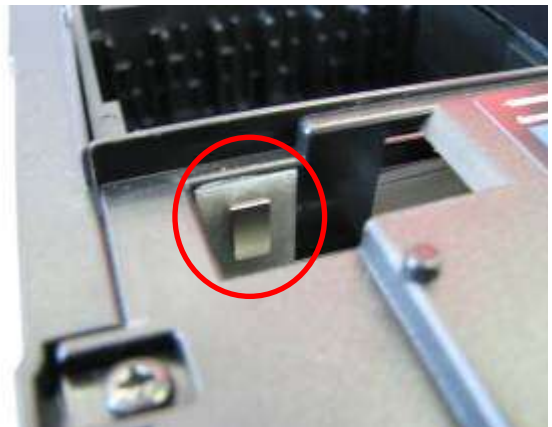
View from front of printer



VIEW FROM REAR OF PRINTER



Sensor not attached



Sensor attached

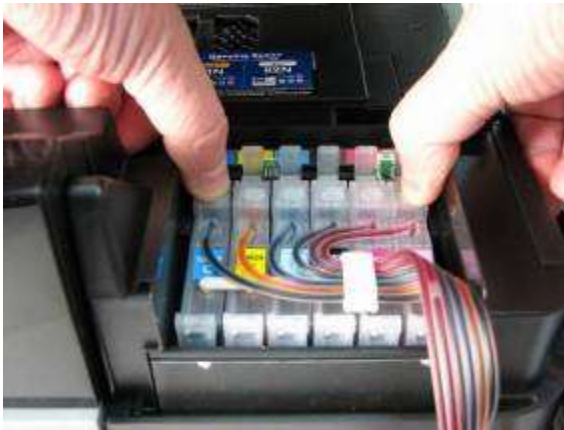
The location of the sensor is very important.

If the sensor is too low, the printer will not recognize that the lid is closed and will give an error message stating for you to close the lid. If the sensor is too high it will give a message that the lid is closed but once the printer starts to print, you will receive a message stating "A printer error has occurred turn off the printer and turn it on again. See your documentation" if this occurs lower the sensor, turn the printer off and on again.

5) Installing the CISS unit

- a) Insert the CISS cartridge pack into your printer. Please ensure that each cartridge is pushed down and clicked into place. The cartridges are initially sealed and require a very firm push to break the seals and click into place correctly.

A common mistake when installing this particular model CISS is that the cartridges have not „clicked“ into place causing the cartridges to indicate they are not being recognized.



- b) Remove the tube retaining clip using the provided screwdriver (keep the retaining clip for step d).



- c) Arrange the tubing so the tubes exit from roughly the middle of the cartridge pack.



- d) To prevent the lid from crushing the ink tubes insert the retaining clip (removed in step b) as depicted.



- e) Close the printer lid. The lid will slightly ajar as it rests on the retaining clip. The lid needs to be closed for the printer to operate.



- f) Reinsert power cable to the rear of your printer and turn on your printer.
- g) Your CISS cartridge pack is fitted with an Intelli reset switch which is used to reset the chip memory to indicate the cartridges are full (when cartridges indicate empty)

It may be necessary to reset the chip once installed. To do this locate the reset button on your cartridge pack and press the button twice and hold together for three seconds each time.



Reverse Angle

- h) Once the printer has initialised perform a head clean and nozzle check as per steps 1a and b. Please note that this may need to be performed several times to ensure excess air is removed from the lines.
- i) If your printer does not perform a perfect nozzle check please refer to the troubleshooting guide at the back of this manual.

